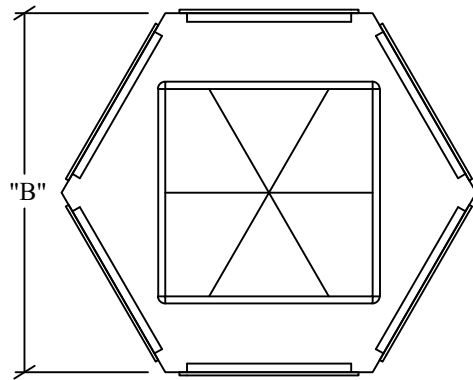
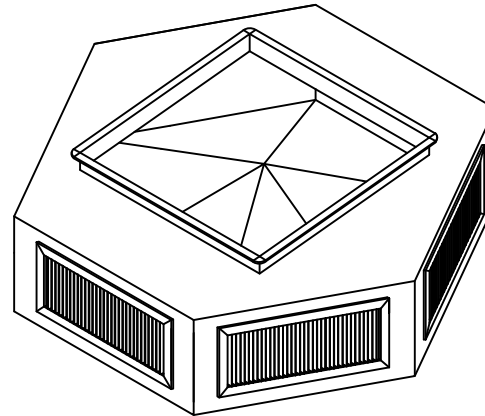


# SIX - WAY THROW

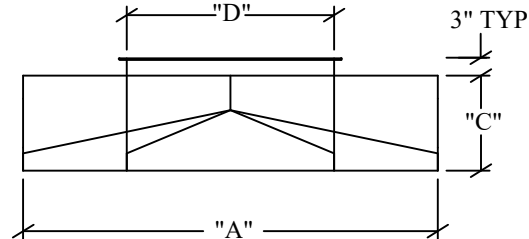
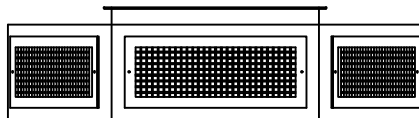
TOP VIEW



ISO VIEW



SIDE VIEW



## STANDARD ITEMS:

- 1: 2" THICK R-8 INTERNAL INSULATION
- 2: 3/8" RIVET NUTS IN CORNERS
- 3: GALVANIZED STEEL CONSTRUCTION ( DROP BOX )
- 4: ALUMINUM DOUBLE DEFLECTION GRILLES ( WHITE )
- 5: TDC TYPE DUCT CONNECTION

## OPTIONS:

- ☐ 1: PAINT DROP BOX ( WHITE )
- ☐ 2: OPPOSED BLADE DAMPERS
- ☐ 3: CLOSED CELL INSULATION
- ☐ 4: DELETE INSULATION
- ☐ 5: DOUBLE DEFLECTION GRILLES ( MILL FINISH )
- ☐ 6: STAINLESS STEEL CONSTRUCTION
- ☐ 7: CUSTOM DUCT INLET SIZE \_\_\_\_\_

## NOTES:


- 1: THROW BASED ON 150-100-50 FPM NECK VELOCITY
- 2: DATA BASED AT ZERO DEGREES DEFLECTION

MODEL#	"A"	"B"	"C"	"D"	GRILLE SIZE	CFM RANGE	NC	THROW MIN#	THROW MAX#
R6WAY-1	41.25"	35.72"	11.0"	20.0"	14 X 6	1,500 - 3,350	11 - 28	13-19-2	26-31-45
R6WAY-2	53.25"	46.12"	11.0"	24.0"	20 X 6	2,600 - 5,000	13 - 32	19-27-38	32-40-56
R6WAY-3	57.25"	49.58"	15.0"	28.0"	20 X 10	4,400 - 8,000	14 - 32	25-35-50	39-47-68
R6WAY-4	67.25"	58.25"	15.0"	33.0"	26 X 10	5,800 - 10,600	17 - 31	29-40-57	40-55-78
R6WAY-5	77.25"	66.90"	17.0"	38.0"	30 X 12	8,200 - 16,000	18 - 34	34-48-68	54-65-93
R6WAY-6	77.25"	66.90"	21.0"	38.0"	30 X 16	11,200 - 20,700	18 - 34	40-56-80	62-77-108
R6WAY-7	87.25"	75.56"	21.0"	40.0"	36 X 16	13,500 - 24,700	20 - 36	44-62-87	68-85-119

#THROW IN FEET

EP Custom Products, Inc.- 7823 Commerce Drive, PO Box 1118, Denver, North Carolina, 28037 704.483.8745

www.epcustomproducts.com

 <p><b>EP CUSTOM PRODUCTS</b> ENDLESS POSSIBILITIES</p>	DOUBLE DEFLECTION DROP BOX MODELS R6WAY-1 THRU R6WAY-7 SIX-WAY THROW
	SUBMITTED TO:
	Items subject to change without notice. EP Custom Products is not responsible to notify of changes or updates in product design. Copyright 2018.
DATE: 11-12-18	
REVISION #: 3	