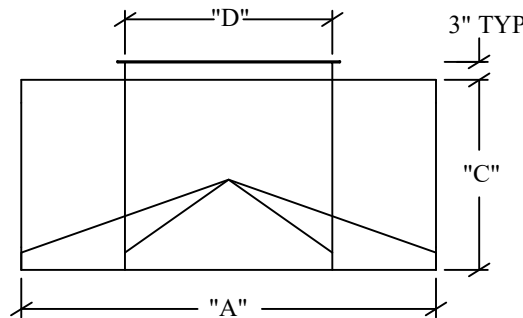
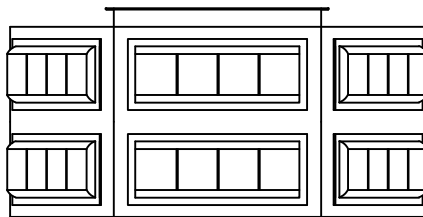
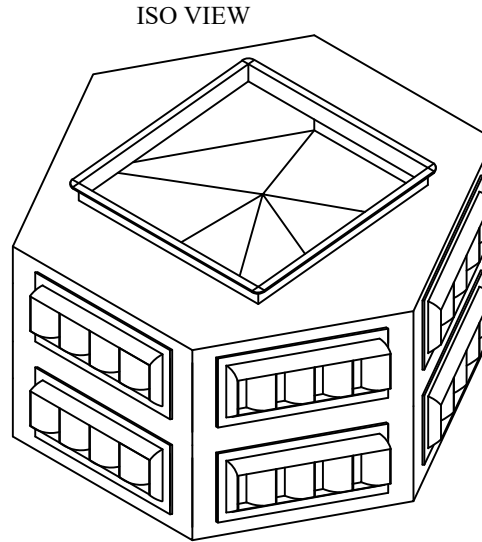
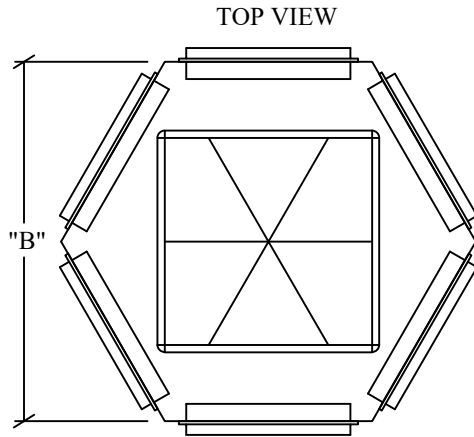


SIX - WAY THROW



STANDARD ITEMS:

- 1: 2" THICK R-8 INTERNAL INSULATION
- 2: 3/8" RIVET NUTS IN CORNERS
- 3: GALVANIZED STEEL CONSTRUCTION (DROP BOX)
- 4: ALUMINUM DRUM LOUVERS (WHITE)
- 5: TDC TYPE DUCT CONNECTION

OPTIONS:

- ☐ 1: 18x5 GRILLE ON BOTTOM
- ☐ 2: OPPOSED BLADE DAMPERS
- ☐ 3: CLOSED CELL INSULATION
- ☐ 4: DELETE INSULATION
- ☐ 5: DRUM LOUVERS (MILL FINISH)
- ☐ 6: STAINLESS STEEL CONSTRUCTION
- ☐ 7: CUSTOM DUCT INLET SIZE _____

NOTES:


- 1: THROW BASED ON 150-100-50 FPM NECK VELOCITY
- 2: DATA BASED AT ZERO DEGREES DEFLECTION

DEFLECTION	NC	THROWS	PT
15 DEGREES	+ 4	X .85	X 1.2
30 DEGREES	+ 8	X .69	X 1.8

MODEL#	"A"	"B"	"C"	"D"	LOUVER SIZE	CFM RANGE	NC	THROW MIN#	THROW MAX#
6WAY-7	77.25"	66.90"	34.0"	40.0"	30 X 12	15,000 - 27,000	23 - 44	45-65-77	65-97-116
6WAY-8	87.25"	75.56"	40.0"	45.0"	35 X 15	26,200 - 48,000	23 - 44	59-86-101	55-81-97
6WAY-9	97.25"	88.42"	40.0"	50.0"	40 X 15	35,000 - 55,000	25 - 41	70-102-120	88-128-152
-	-	-	-	-	-	-	-	-	-

#THROW IN FEET

www.epcustomproducts.com

 <p>EP CUSTOM PRODUCTS ENDLESS POSSIBILITIES</p>	DRUM LOUVER DROP BOX MODELS 6WAY-7 THRU 6WAY-9 SIX-WAY THROW
	SUBMITTED TO:
	Items subject to change without notice. EP Custom Products is not responsible to notify of changes or updates in product design. Copyright 2018.

DATE: 11-11-18

REVISION #: 2

EP Custom Products, Inc.- 7823 Commerce Drive, PO Box 1118, Denver, North Carolina, 28037 704.483.8745